

ArcelorMittal Europe – Flat Products



ArcelorMittal

## Granite<sup>®</sup> Impression

Impressive aesthetics for buildings





# Granite® Impression Patina



# Granite® Impression Wood Palisander

Terracotta



Golden



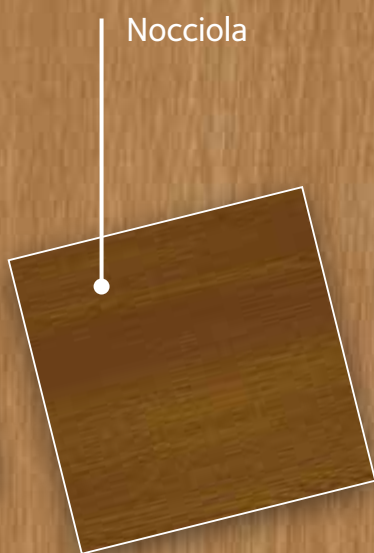
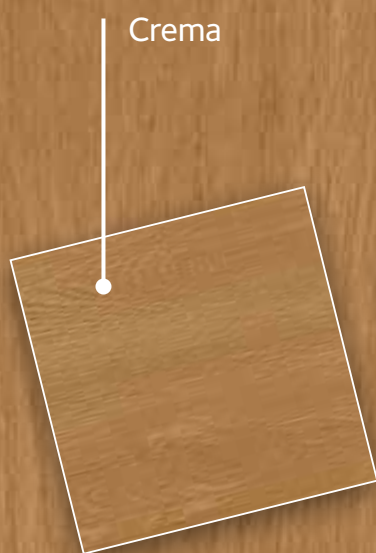
Anticato





# Granite® Impression Wood

## Noce





# Granite<sup>®</sup> Impression Wood

## Alder

Beige

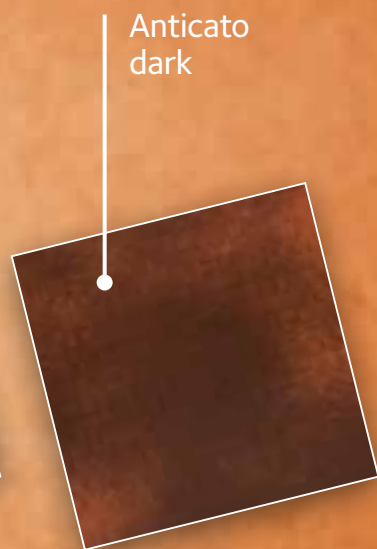
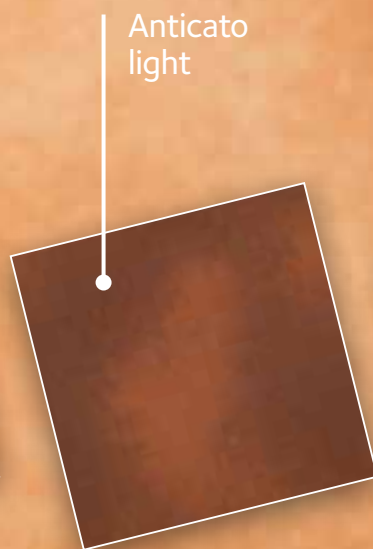
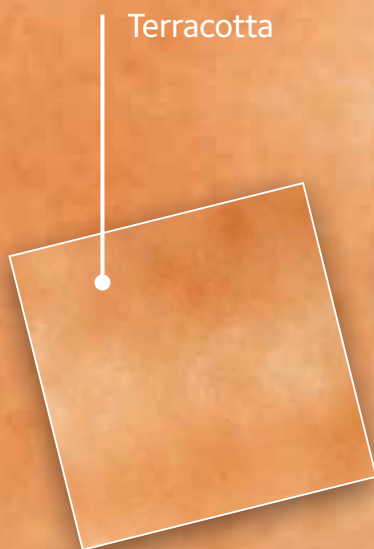


Amber



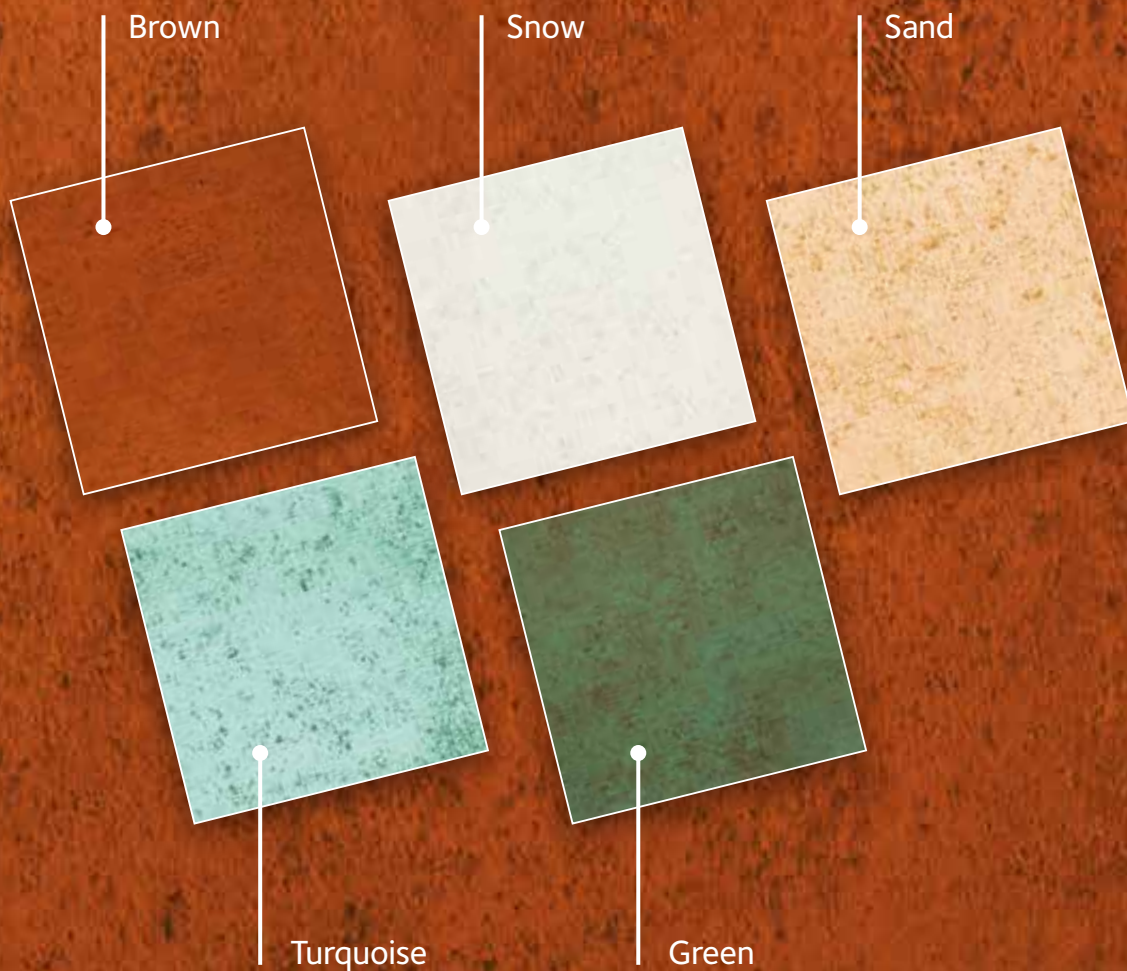


# Granite® Impression Cloudy





# Granite® Impression Agate



# Granite® Impression

Granite® Impression is a multilayer organic steel coating with an offset printed pattern. It is protected by a UV-resistant varnish. The coating is applied on a hot dip galvanised steel.

## Applications

Granite® Impression was initially developed for roofs and facades. It has also inspired many other applications including doors, partition walls, garden pools, roof fascias, and fences.

Granite® Impression can be formed into sandwich and cassette panels, profiled sheets, solar shades and fins, blades, and other slim profile elements.

The steel grade and zinc weight must be specified in accordance with the requirements of the application and local regulations.

## Processing

Granite® Impression can be processed by cold forming and deep drawing without damaging the top surface. It can be joined using techniques such as clinching, riveting, and adhesive bonding. Its unique flexibility allows sophisticated and bold designs.

## Guarantee

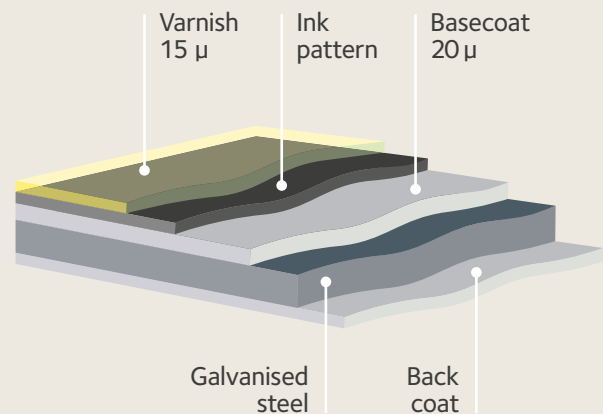
Granite® Impression has been subjected to a battery of tests in the laboratory and at outdoor exposure sites to guarantee the best possible product performance.

An automatic guarantee against corrosion and peeling of the coating is granted for up to 15 years, depending on the external environment.



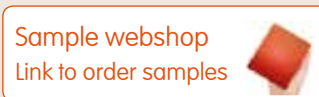
Gloss (GU, Gardner 60°)	5/20/30
Paint thickness (µm)	35
Available metallic substrates	Z225, Z275
Finish	Smooth, wrinkle or grained, depending on the colour
Salt spray test	360 hours
RC (corrosion resistance category)	RC3
RUV (UV resistance category)	RUV4
Adhesion of the coating (T-bend)	Cloudy ≤ 0.5T Wood, Agate, Patina ≤ 1T
Resistance to cracking on bending (T-bend)	Cloudy ≤ 1T Wood, Agate, Patina ≤ 2T
Thickness	0.5-1.5 mm Other dimensions on request
Guarantee (*)	15 years

\*Guarantee conditions are available on our website [industry.arcelormittal.com](http://industry.arcelormittal.com)

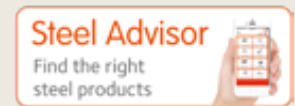


Sustainable organic coated steel product range, always delivered with coatings and surface treatments free of hexavalent chromium and heavy metals (lead or hexavalent chromium complex)\*.

\* Substances of Very High Concern included in the REACH candidate list



[industry.arcelormittal.com/samplewebshop](http://industry.arcelormittal.com/samplewebshop)



[industry.arcelormittal.com/steeladvisor](http://industry.arcelormittal.com/steeladvisor)

To identify the agency closest to you, please go to: [industry.arcelormittal.com/agencies](http://industry.arcelormittal.com/agencies)

Any questions? Ask them via our contact form on [industry.arcelormittal.com/getintouch](http://industry.arcelormittal.com/getintouch)

Image credits : Philippe Vandenamele, Lionel Coutier, Francis Crochet, Jeroen Op de Beeck, ArcelorMittal, MMS Modüler, Standart Group.



ArcelorMittal Europe – Flat Products  
24-26, boulevard d'Avranches  
L-1160 Luxembourg  
[industry.arcelormittal.com/granite](http://industry.arcelormittal.com/granite)